

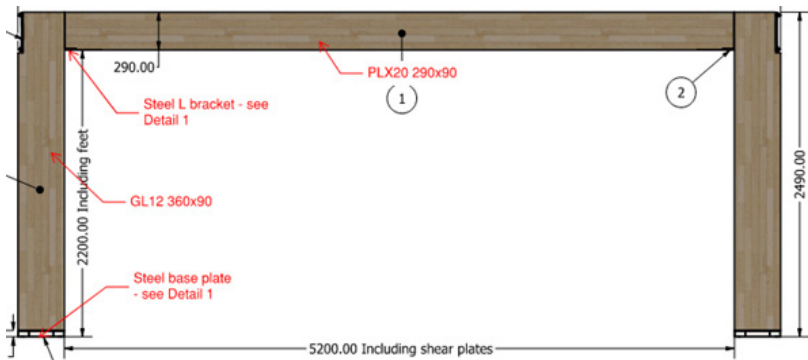
Prolam[®] Bracing Portal..coming soon!

A sneak peek

Features and Benefits

- Sustainable portal solution over against steel
- Pre-engineered solution creating ease of specification with PS1 certificate.
- Timber Lintel and legs can be cut to length to suit project.
- Fast and simple to assemble on site using standard tools.
- Trusses and frames can be connected directly to the portal using brackets, nails and screws.
- Portal provides bracing units to resist Wind and Earthquake loads (Tested to the P21 BRANZ test Methodology)
- The system has a ductility of 3.0 and is compatible for NZS3604 type internal construction.

P21 tests carried out at Scion on 28th March 2023



PLX20 Portal System Bracing Capacity - 5.2m Lintel

Max Column Height (m)	Wind BUs	Earthquake BUs
2.55	163	196
2.70	154	185
3.00	147	176

Contact us to learn more!

+64 3 526 7436 | info@prowoodnz.com | prolamnz.com