

# The Prolam<sup>®</sup> Finishes

## Visual - Appearance A

This grade is intended for use in applications where appearance of the member is important and clear or painted finishes are used. All surface voids are filled, small tight knots are permitted. The surfaces are planer machined to a high quality finish.



## Non-Visual H3.2 - Appearance C

This grade is intended for use in applications where appearance is unimportant. All appearance blemishes are permitted in this grade. The surfaces are machined, but machine skip is permissible and blemishes, voids and manufacturing will remain unrepaired. Loose, knots, wane, pith and open knot holes may be present.



## Non-Visual H1.2 - Appearance C

This grade is intended for use in applications where appearance is unimportant. H1.2 treatment is coded pink. All blemishes are permitted in this grade. The surfaces are machined, but skip is permissible and blemishes, voids and manufacturing will remain unrepaired. Loose knots, wane, pith and open knot holes may be present.



Please email [info@prowoodnz.com](mailto:info@prowoodnz.com) if you would like to request samples.

## Bandsawn

This is only supplied in the visual grade, as it is used for rustic visual appearance, the “roughness” of the bandsawn finish may vary slightly between batches.

This product must be sealed as per our sealing specifications.



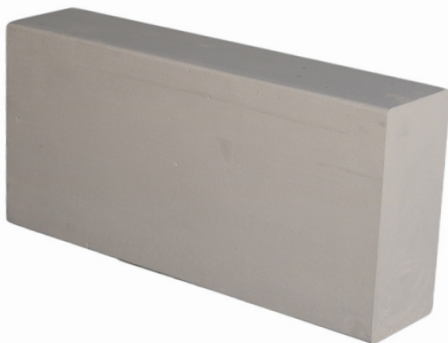
## Sanded and sealed

This is a premium finish added to a visual product, where all blemishes are filled, the whole product is sanded and then coated with a sealer that will protect the product from ingress of moisture for 6-8 weeks. This sealer is not a long term sealer. The product must be sealed for the long term as per our sealing specifications.



## Preprimed

This is a primary coat that is applied in our factory as a protective coat to stop ingress of moisture until the undercoat and top coats are applied. This primer coat is not to be used as the final finish and the product must be sealed for the long term as per our sealing specifications.



Please email [info@prowoodnz.com](mailto:info@prowoodnz.com) if you would like to request samples.